

gemetallic

09 62 00 DECORATIVE
EPOXY FLOORING



product description:

EPOXY GEMETALLIC is a unique solvent-free 3 mm (1/8") thick commercial epoxy/urethane floor and wall system.

The Gemetallic flooring system incorporates the perception of incredible depth along with the ability to vary colour and tone from different viewing angles and under varying lighting conditions. Gemetallic is a three coat epoxy process sealed with non-slip urethane. The system is available in any of our standard colours. Custom colour matching is available upon request.

product features:

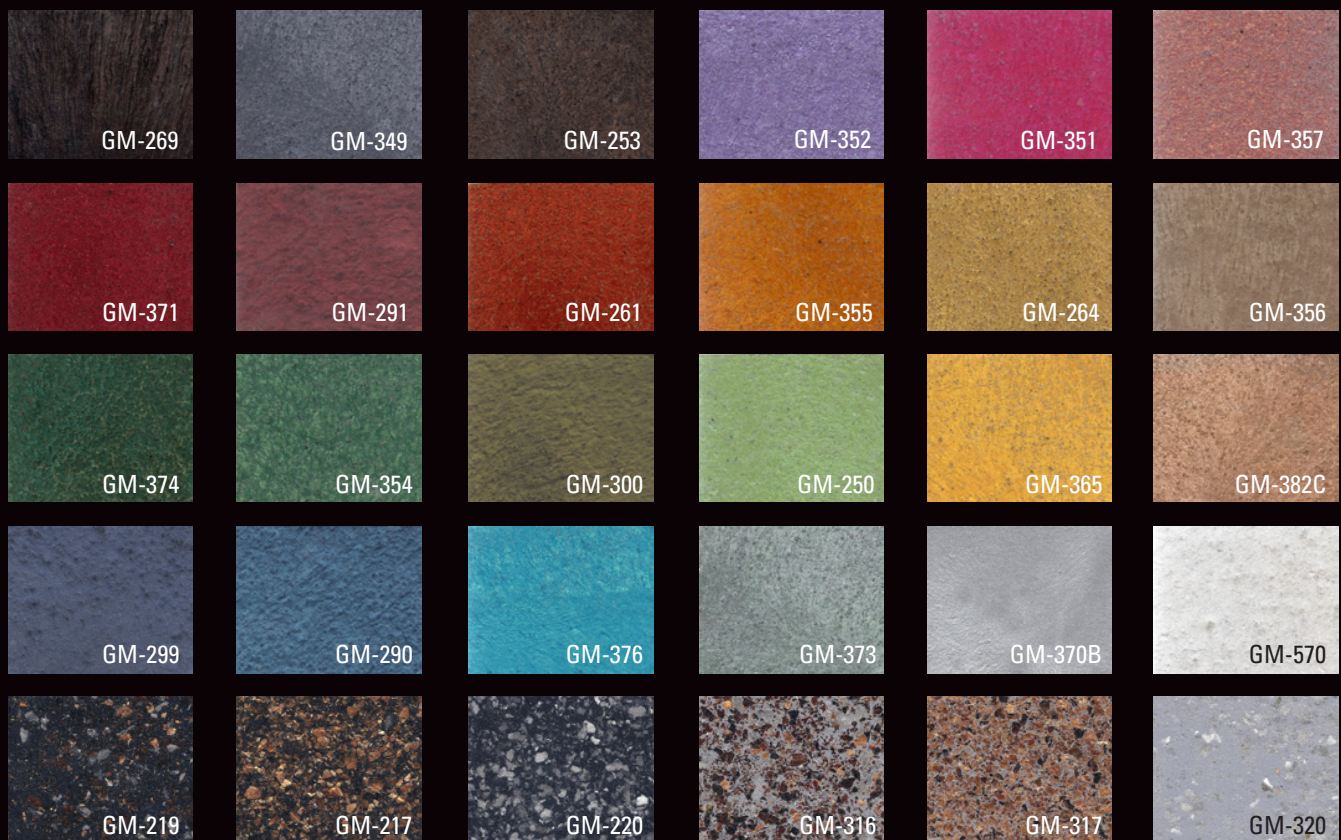
- Has a 3D appearance.
- Provides a natural metallic luster and brilliant design style.
- Any pattern or logo can be incorporated into the floor by way of decorative cutting & grouting and or the use of divider strips & inserts.
- Available in any of our colours from our colour chart. Degree of pigment determines the extent of translucency.
- Optional satin or gloss finish installed with non-slip.
- Can be applied over most clean, sound, solid cementitious surfaces, as well as plywood, OSB, or virtually any porous substrate.
- For renovations Gemetallic can be applied over any existing concrete, terrazzo or tile floor only raising the height of the floor 4 mm (5/32") and can be troweled to a feathered edge when meeting existing flooring.
- Can be ground & polished over time similar to terrazzo flooring.



typical uses:

- Airport Public Areas & Lounges
- Stadiums and Theatres
- Auto Dealerships
- Banquet Halls
- Office Building Lobbies
- Bars, Pubs and Taverns
- Hotel Lobbies & Exhibition Areas
- Nightclubs and Lounges
- Restaurants
- Casinos
- Shopping Centres & Stores

colour chart





surface preparation:

General Preparation:

Remove any contamination; all surfaces to be coated must be clean, dry and free of all contaminants. Concrete must be cured a minimum of 30 days with no more than 4% moisture content. Cracks and control joints need to be addressed prior to installation.

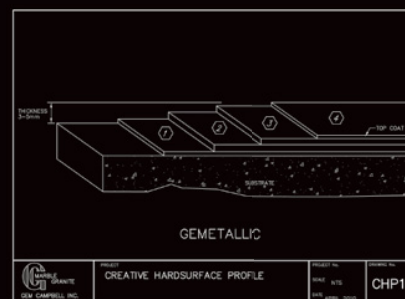
For 'movement joints' please refer to Gemetallic specification. Any 3–4 mm metal transition strips or finishing edges, (straight or with a radius) can be used in conjunction with this material. For patching holes, sloping areas towards floor drains or away from walls, the area needs to be assessed and addressed prior to installation of Gemetallic. For large areas requiring a build-up of material, consult with concrete contractor, engineer and Shoreway Flooring to ensure compatibility with epoxy system. This system can be installed on floors with varying degrees of slope; determined prior to installation. Vertical surfaces must be prefabricated and installed.

Tiles, Concrete and Other Cementitious Substrates:

Shot blasting and diamond grinding are the recommended methods. These two means of mechanical abrasion will clean the surface and open the pores of the substrate to allow maximum penetration of the primer (minimum CSP rating is 2). Ensure the methods of mechanical abrasion are dust-free.

Wood Preparation:

All wood surfaces to be coated must be clean, dry and free of all contaminants. The wood surface must be rigid, with no possibility of movement.



application:

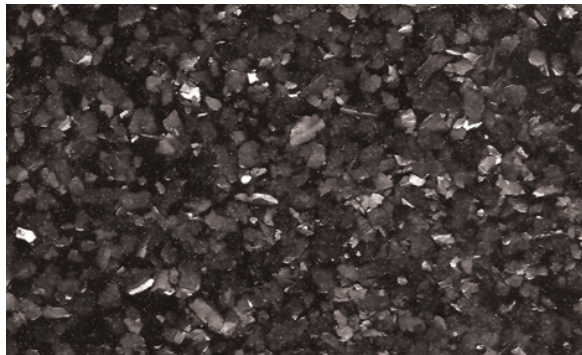
This is a four coat epoxy/urethane flooring system with varied drying times between coats. Both large & small areas can be completed in a short period of time if climate can be controlled.

curing:

At a temperature of 22°C (72°F), Gemetallic will support light traffic in 12 hours. Gemetallic will reach full cure and chemical resistance in 7 days.

limitations:

- Product must be installed in a controlled environment with a minimum surface and substrate temperature of 16°C.
- Product will amber if it is under prolonged ultra violet light.
- This product is not recommended for areas that are exposed to severe thermal shock (interior only and not recommended for commercial kitchens).
- Substrate must contain less than 4% moisture without the use of a moisture control system (prior to installation).
- Application of an epoxy coating over an existing paint or urethane surface will void warranty.



gemetallic

09 62 00 DECORATIVE
EPOXY FLOORING

warranty:

Standard 1 year construction applies on full scope of work. Longer warranties and maintenance packages available upon request.

company history:

Established in 1974, Shoreway Flooring Ltd. is an industry leader in carpet, resilient floorings, stone and marble. We have completed hundreds of projects, large and small throughout Ontario. Company-wide dedication to quality, service, professionalism, and a commitment to meeting clients needs are the core values of the company.

for info & full 3-part specification contact:

Gary Chiesa

C: 416-936-6120

E: shorewayflooring@rogers.com



11 Skipton Court
North York, ON M3M 2S9
P: (416) 635-1541 F: (416) 635-9098



TECHNICAL DATA

SHEEN:	Satin or Gloss
VOLUME SOLIDS:	100%
AVERAGE THICKNESS:	3mm
CURE TIME @22°C (72°F):	Light traffic: 12 hrs. Full Cure 7 days
MIXED VISCOSITY @ 25°C (77°F):	700 +-200 CPS (ASTM D445-83)
CLEANUP:	Solvent free epoxy thinners

PERFORMANCE DATA

Typical Performance After 7 Days Cure@25°C(77°F):

COMPRESSIVE STRENGTH:	10 370 psi ASTM 695-85
TENSILE STRENGTH:	2 200 psi @ 7 days ASTM D638-10
FLEXURAL STRENGTH:	3 310 psi @ 7 days ASTM D790-10
FLEXURAL MODULUS:	470 ksi @ 7 days
HARDNESS:	82(SHORE D)
ABRASION RESISTANCE:	.033g (ASTM D4060-90)
VOC's:	Results pending
SLIP RESISTANCE 25:	0.97 DRY 0.82 WET
CHEMICAL RESISTANCE:	Consult Specification
COEFFICIENT OF FRICTION:	0.734 DRY, CLEAN ASTM C1028-07E1 0.621 WET, CLEAN